

## EXISTING LONG BRIDGE CONDITIONS

Long Bridge is a 2-track railroad bridge over the Potomac River. It is the only freight railroad bridge between the District of Columbia and Virginia. The next closest bridge is in Harpers Ferry, WV. The current bridge was built in 1904, and is owned and maintained by CSX Transportation. In addition to freight trains, the bridge is used by VRE and Amtrak.



## EIS SCOPING PROCESS

Scoping is the first step in preparation of the EIS. We are hoping to get comments on matters such as:

- ✦ What rail service improvements are critical to you (e.g., reliability, frequency)?
- ✦ Are there any other environmental resources, parks or recreational facilities, neighborhoods, or community facilities in the study area which you feel could be affected by the project?

Following the scoping period we will prepare a report summarizing public and agency comments. This report will be available on the project website ([www.longbridgeproject.com](http://www.longbridgeproject.com)).

## FUTURE PUBLIC COMMENT OPPORTUNITIES

Environmental Impact Statement (EIS) Scoping	August 26, 2016 - October 14, 2016
Preliminary Concepts and Detailed Alternatives Screening	Fall 2016 - Spring 2017
Draft EIS Available for Comment/Public Hearing	Summer 2018
Final EIS/ Record of Decision	Spring 2019

## CONTACT US

The deadline for EIS scoping comments is October 14, 2016

Comments can be provided any of the following ways:

- ✦ At this meeting
- ✦ Website: [www.longbridgeproject.com](http://www.longbridgeproject.com)
- ✦ Email: [info@longbridgeproject.com](mailto:info@longbridgeproject.com)
- ✦ Mail: Ms. Amanda Murphy  
Environmental Protection Specialist  
Office of Railroad Policy and Development  
Federal Railroad Administration  
1200 New Jersey Avenue, SE  
(Mail Stop-20)  
Washington, DC 20590



## Environmental Impact Statement (EIS) Fact Sheet



SEPTEMBER 2016

## STUDY AREA

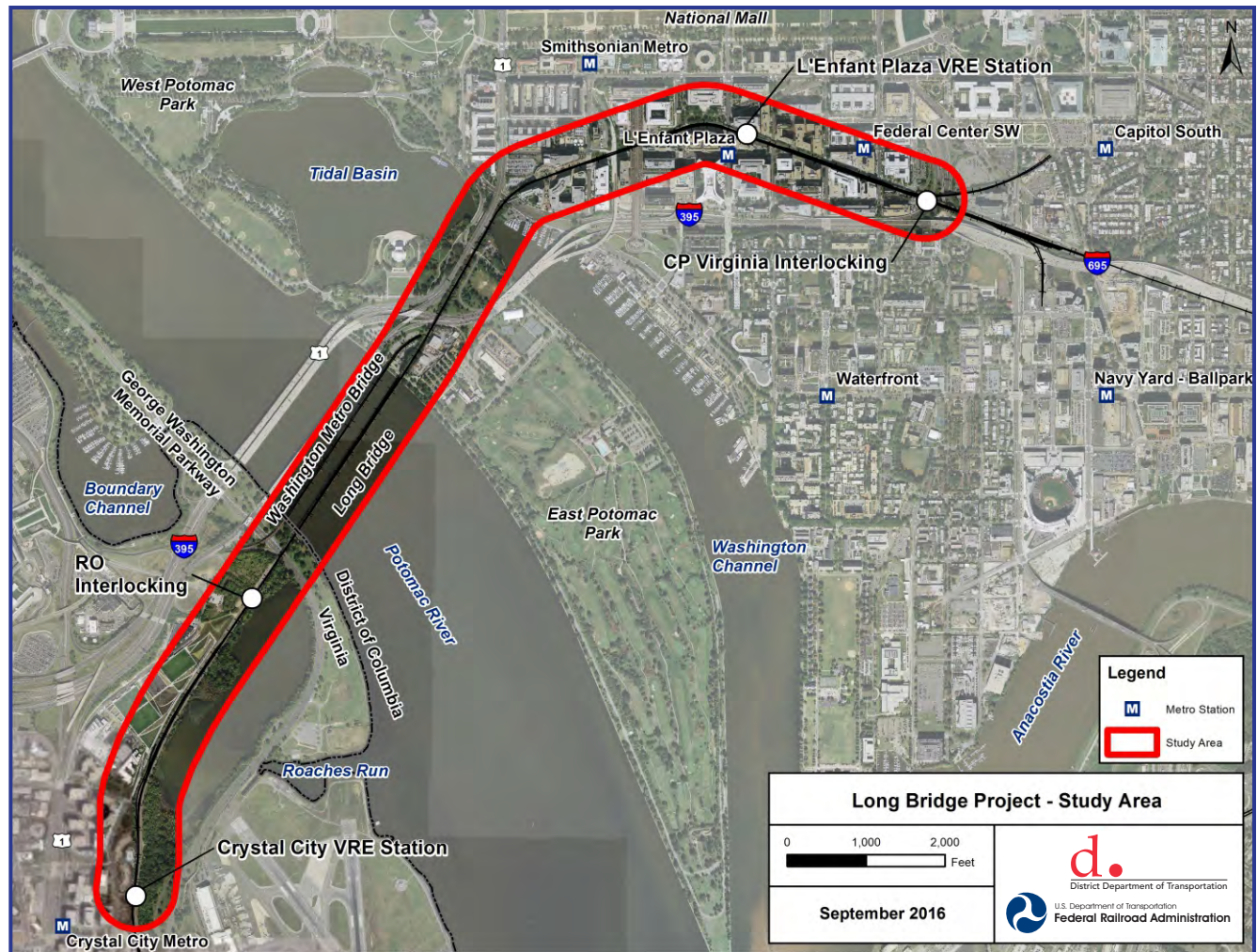
The EIS Study Area extends approximately 3.2 miles from the VRE Crystal City Station in Arlington, VA to Control Point Virginia located near 3rd Street, SW in Washington, DC. The Study Area includes park land; historic and cultural properties; the Potomac River; offices, hotels, and apartment buildings; transportation facilities; and numerous pedestrian and bicycle trails.



## PURPOSE AND NEED

The number of trains using the bridge each day is expected to increase from 74 today to 192 in 2040. On-time performance for Amtrak is expected to drop from 69% today to 16% in 2040. For VRE, on-time performance is expected to drop from 94% to 48% in the same period.

The purpose of the project is to address reliability and long-term railroad capacity issues for the Long Bridge corridor. The project is needed to identify alternatives that would increase capacity to meet projected demand for passenger and freight rail services; improve operational flexibility and resiliency; and provide redundancy for this critical link in the local, regional, and national railroad network.



## ENVIRONMENTAL CONSIDERATIONS

- ✦ Transportation
- ✦ Social and economic conditions
- ✦ Property acquisition
- ✦ Parks and recreational resources
- ✦ Visual and aesthetic resources
- ✦ Historic and archaeological resources
- ✦ Air quality
- ✦ Aquatic navigation
- ✦ Greenhouse gas emissions and resilience
- ✦ Noise and vibration
- ✦ Ecology (including wetlands, water and sediment quality, floodplains, and biological resources)
- ✦ Threatened and endangered species
- ✦ Hazardous waste and contaminated materials
- ✦ Environmental Justice